

ipdoor



SIRIO

MECHANICAL ACTUATOR FOR SLIDING GATES

SLS

MECHANICAL ACTUATOR FOR SLIDING GATES

Sirio is a three-phase electromechanical gearmotor, designed for the automation of industrial sliding gates up to 5000kg. Available in a 400V version, it features an oil-bath reducer for high and lasting performance, ensuring safety and precision of movement through its electromechanical end-of-travel system and mechanical clutch with electro-brake.

DESIGN

Sirio stands out for its **robust and functional design**, ideal for industrial applications. Its aluminum structure, treated with anti-corrosive paint, ensures resistance to weathering while maintaining a professional and durable appearance over time. The safety door with a personal key emphasizes attention to security and practicality, integrating aesthetics and functionality into a single product.

ELECTRONICS

The heart of Sirio is represented by its advanced electronics, with an **internal and protected control board**, ensuring optimal management of the three-phase motor. This allows for intensive use with maximum power, while ensuring safety and reliability. The extendable electromechanical end-of-travel optimizes opening and closing phases, making "Sirio" an ideal solution for the most demanding needs.

MODULARITY

Sirio offers excellent modularity, thanks to the possibility of **extending the electromechanical end-of-travel** and the presence of an easily accessible internal control board. These features make it adaptable to different operational contexts, allowing customization based on specific installation and use requirements.

MECHANICS

The mechanics of Sirio are designed to withstand the most severe usage conditions. The oil-bath reducer and the mechanical clutch with electro-brake ensure **high performance and long life**, even in intensive use conditions. The key for manual emergency unlocking offers a practical solution for emergency management, highlighting the commitment to safety and maintainability.

COLORS



ANTHRACITE

TECHNICAL FEATURES

SLS4050M0501		
MECHANICAL FEATURES	CAPACITY	5000Kg
	SUPPLY VOLTAGE	400VAC
	IP GRADE	IP54
	WEIGHT	44 Kg
	MAXIMUM SPEED	8,3 m/min
	OUTPUT REVOLUTIONS	33
	NUMBER OF Z-PINION MODULE 4	20
	GEAR TEETH	✕
	RACK MODULE	4
	MAXIMUM INITIAL POWER CONSUMPTION	750 W
	OUTPUT TORQUE	85 N/m
	WORK CYCLE (CYCLES / h)	45
	DUTY CYCLE	90%
	BUILT-IN ENCODER ON ELECTRIC MOTOR	✕
	ENCRYPTED UNLOCK KEY	✓
	ELECTROMECHANICAL LIMIT SWITCH	✓
ACCESSORIES	BATTERIES	✕
	DIGITAL TPI™	✕
	MAGNETIC LIMIT SWITCH	✕
	DIAGNOSTIC INTERFACE (RGB+ACUSTIC)	✕
	UNLOCK LEVER ACTIVATION SENSOR	✕
	WI-FI MODULE	✕



EXPLORE THE FEATURES AND OPTIONS

1 POWER AND DURABILITY

Sirio is equipped with a three-phase motor that ensures maximum power to move gates up to 5000Kg, making it ideal for industrial applications where intensive use is the norm. Its robust construction and oil-bath reducer promise long-lasting reliability without compromise.

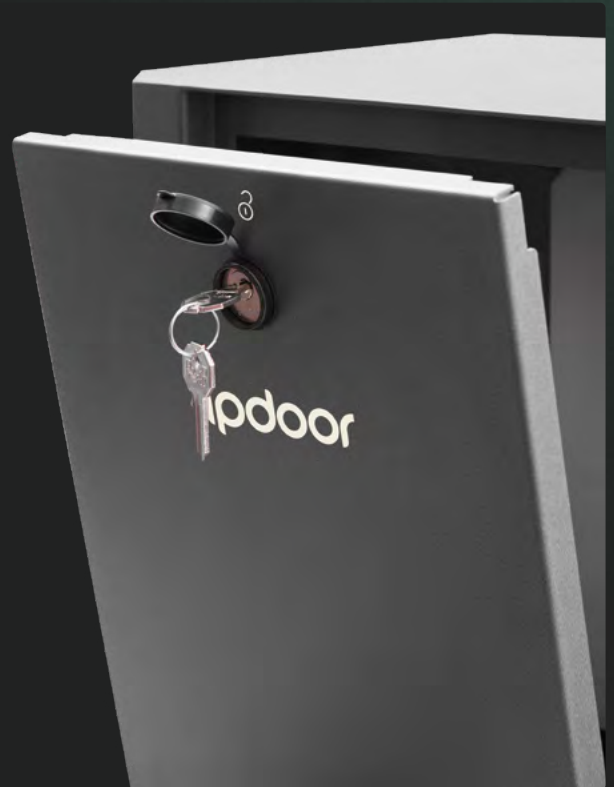


2 ADVANCED SAFETY

Safety is at the forefront of Sirio's design, with a safety door equipped with a personal key and an electro-brake that reduces stopping space, increasing safety for users and protecting assets.

3 EASE OF MAINTENANCE

The presence of a key for manual emergency unlocking and the protected internal control board facilitate maintenance and intervention operations, reducing downtime and ensuring effective management even in critical situations.



INTEGRATED ACCESS CONTROL ECOSYSTEM

- ✓ REMOTE CONCIERGE MANAGEMENT
- ✓ LOG MANAGEMENT: IMAGE HISTORY
- ✓ INTEGRATION WITH KONE ELEVATORS



DISCOVER MORE

1 OUTDOOR DEVICES

Video intercom calling;
Door and gates control;
Access control for residents or workers;
Welcoming temporary guests;

2 INDOOR DEVICES

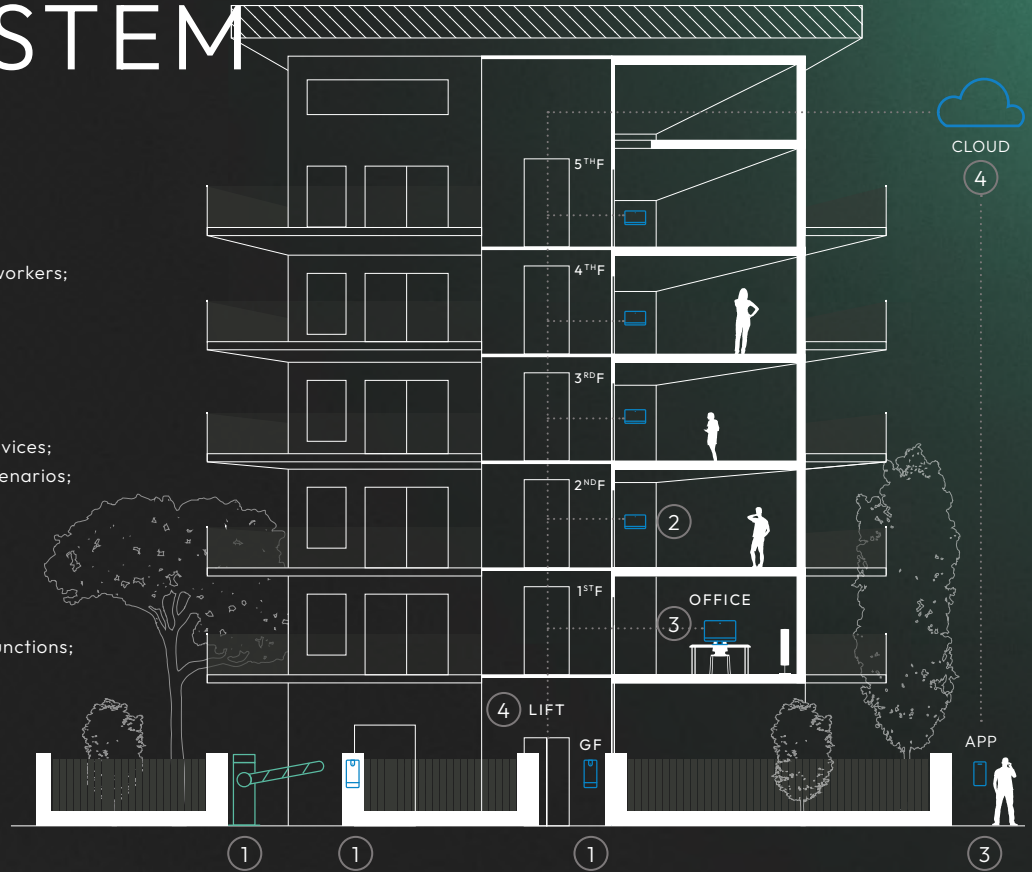
Answering video intercom calls;
Commanding physical access devices;
Controlling home automation scenarios;

3 SOFTWARE FOR REMOTE INTERACTION:

Mobile app with enhanced UX;
Computer app for centralized functions;
Concierge services;

4 API INTERFACES

Cloud and local interaction with third-party devices.



INTEGRATIONS

Thanks to IP technology and open APIs, the IpDoor system has high design flexibility, allowing you to integrate third-party systems in a secure and flexible way.

This allows you to expand and customize, with other smart devices, a project without limitations, enriching your daily life with comfort and cutting-edge technology.

REAL-TIME DIAGNOSTICS

Real-time monitoring of the status and functionalities is possible. This advanced system provides detailed data and information on the operation of the plant, allowing for efficient maintenance and quick resolution of any problems or malfunctions. Predictive diagnostics and maintenance are facilitated

by the development of a reliable system, managed through a proprietary console, thus ensuring an optimal user experience and simplified management of assistance, even remotely thanks to the intuitive control and monitoring app.

HOME AUTOMATION AND SCENARIOS

IpDoor allows the creation of automated scenarios for access management, ensuring greater security and more flexible and personalized control. IpDoor transforms every environment into a more connected and responsive space to individual needs, creating transit flows and automations that allow entry

and movement in a fluid manner. Easy, like arriving home, seeing the front door opening, the driveway lights turning on, the entrance door opening and the elevator already ready to take me to my home floor.

ipdoor

DESIGN BY MISURAUNO.IT



MADE IN ITALY

IpDoor S.r.l.

Via Andreon, 2F/2G
35010 - Vigonza (PD) | Italy

(+39) 049 825 6725
info@ipdoor.com

IPDOOR.COM



IPDOOR IS A BRAND OF XM WORLD

